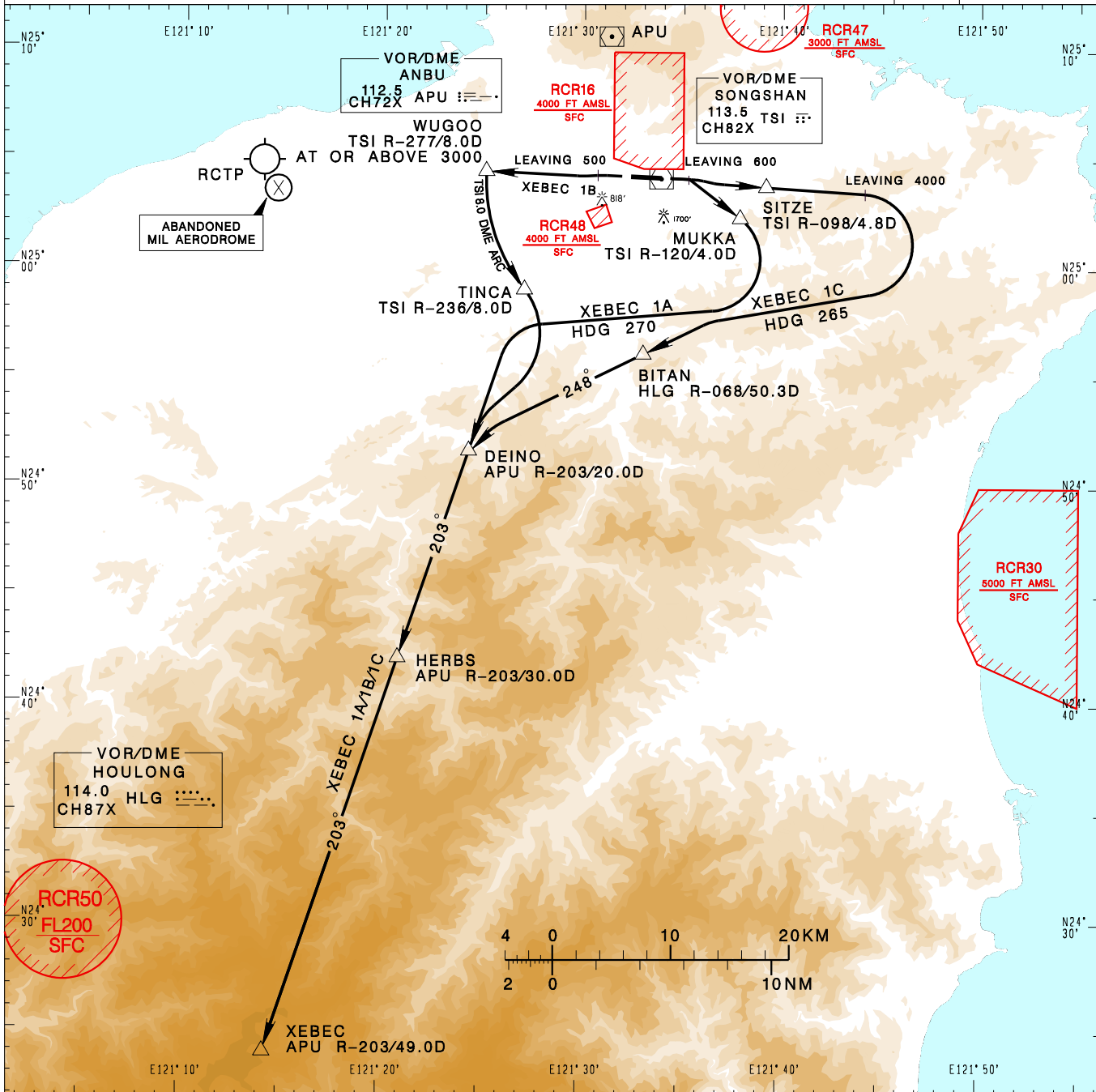


臺北/松山機場  
TAIPEI/SONGSHAN AD

RCSS SID  
XEBEC 1A(RWY10)/XEBEC 1C(RWY10)  
XEBEC 1B(RWY28)

TAIPEI APP 119.7 119.6 125.1	SONGSHAN TWR 118.1	ATIS 127.4 341	VAR 5° W-2022	9100'
Apt Elev: 18'		Trans Level: FL130		

BEARINGS ARE MAGNETIC; DISTANCES ARE NAUTICAL MILES; ELEVATIONS, HEIGHTS IN FEET



CHANGES: NEW CHART	<p><b>XEBEC ONE ALFA DEPARTURE</b> Climb on RWY HDG until 600ft, then track TSI R-120 to MUKKA, after passing MUKKA, turn right HDG 270 to intercept APU R-203 to DEINO, HERBS, XEBEC.</p>	<p><b>NOTE</b></p> <ol style="list-style-type: none"> <li><b>XEBEC 1A:</b> Minimum climb gradient required: 7.4% (450ft/NM) until MUKKA, then 5.5% (335ft/NM) until HERBS, then 3.8% (231ft/NM) until XEBEC. Speed restriction: MAX 230KT IAS until DEINO.</li> <li><b>XEBEC 1B:</b> Minimum climb gradient required: 7.0% (426ft/NM) until WUGOO, then 6.0% (365ft/NM) until DEINO, then 5.0% (304ft/NM) until HERBS, then 3.8% (231ft/NM) until XEBEC.</li> <li><b>XEBEC 1C:</b> Minimum climb gradient required: 7.0% (426ft/NM) until 4000ft, then 3.8% (231ft/NM) until XEBEC. Speed restriction: MAX 250KT IAS until BITAN.</li> <li>ATS surveillance required.</li> <li>Caution high terrain around airport.</li> <li>A 1700ft-high BLDG at 2.1NM south of THR 28.</li> <li>A 818ft-high BLDG at 2 NM SW of THR 10.</li> </ol>
	<p><b>XEBEC ONE BRAVO DEPARTURE</b> Climb on RWY HDG until 500ft, then track TSI R-277 to WUGOO, cross WUGOO at or above 3000ft, then turn left join TSI 8.0 DME arc to TINCA, then turn right to track APU R-203 to DEINO, HERBS, XEBEC.</p>	
	<p><b>XEBEC ONE CHARLIE DEPARTURE</b> Climb on RWY HDG until 600ft, then track TSI R-098 to SITZE, continue TSI R-098 until 4000ft, then turn right HDG 265 to intercept HLG R-068 to BITAN, then continue HLG R-068 to intercept APU R-203 to XEBEC.</p>	